

## SMD Power Inductors - SDR75 SERIES



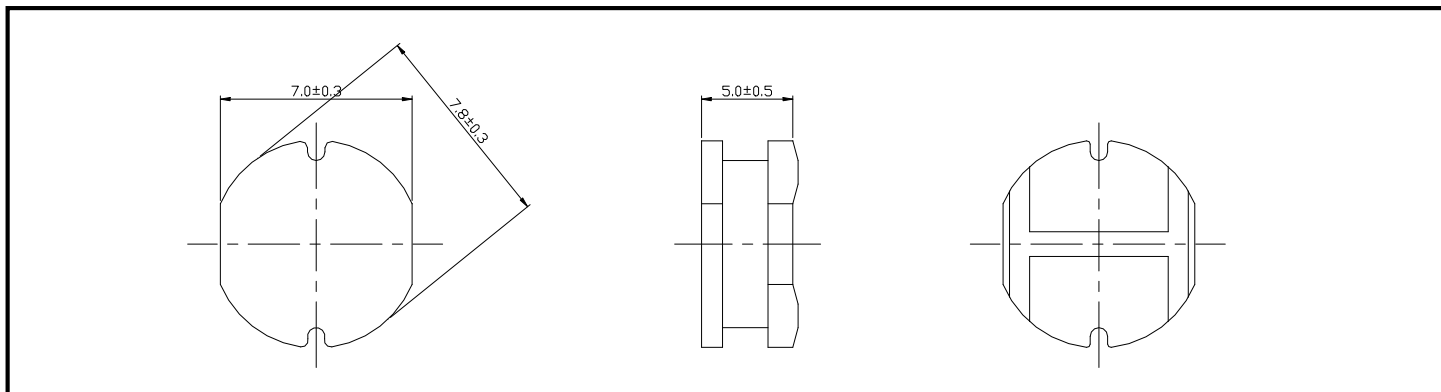
### PART NUMBERING SYSTEM

(AEC-Q200)

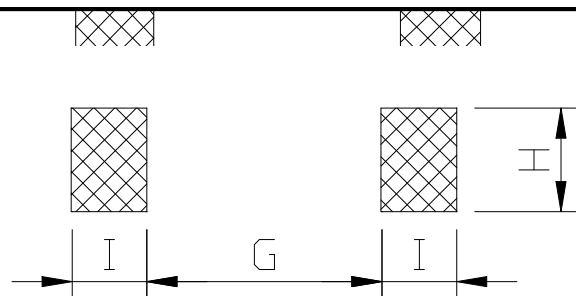
<b>SDR</b>	<b>75</b>	—	<b>101K</b>	—	<b>LF</b>
TYPE	DIMENSIONS		INDUCTANCE		LEAD FREE

### SHAPES AND DIMENSIONS

UNIT : mm



### PCB PATTERN



**G=2.0 Ref . H=7.5 Ref . I= 3.0 Ref.**

### FEATURES

- Metalized drum core design utilizes board space
- Ideal for Buck or Boost inductors , Noise filtering and output filter chokes
- Lead free and RoHS compliant option
- Low cost solution

## SPECIFICATION TABLE

PART NUMBER	INDUCTANCE ( $\mu$ H)	DCR ( $\Omega$ ) (Max.)	IDC (A) (Max.)	TEST FREQ. (MHz)
SDR75-100M-LF	10 $\pm$ 20%	0.07	2.30	2.52
SDR75-120M-LF	12 $\pm$ 20%	0.08	2.00	2.52
SDR75-150M-LF	15 $\pm$ 20%	0.09	1.80	2.52
SDR75-180M-LF	18 $\pm$ 20%	0.10	1.60	2.52
SDR75-220M-LF	22 $\pm$ 20%	0.11	1.50	2.52
SDR75-270M-LF	27 $\pm$ 20%	0.12	1.30	2.52
SDR75-330K-LF	33 $\pm$ 10%	0.13	1.20	2.52
SDR75-390K-LF	39 $\pm$ 10%	0.16	1.10	2.52
SDR75-470K-LF	47 $\pm$ 10%	0.18	1.10	2.52
SDR75-560K-LF	56 $\pm$ 10%	0.24	0.94	2.52
SDR75-680K-LF	68 $\pm$ 10%	0.28	0.85	2.52
SDR75-820K-LF	82 $\pm$ 10%	0.37	0.78	2.52
SDR75-101K-LF	100 $\pm$ 10%	0.43	0.72	1KHz
SDR75-121K-LF	120 $\pm$ 10%	0.47	0.66	1KHz
SDR75-151K-LF	150 $\pm$ 10%	0.64	0.58	1KHz
SDR75-181K-LF	180 $\pm$ 10%	0.71	0.51	1KHz
SDR75-221K-LF	220 $\pm$ 10%	0.96	0.49	1KHz
SDR75-271K-LF	270 $\pm$ 10%	1.11	0.42	1KHz
SDR75-331K-LF	330 $\pm$ 10%	1.26	0.40	1KHz
SDR75-391K-LF	390 $\pm$ 10%	1.77	0.36	1KHz
SDR75-471K-LF	470 $\pm$ 10%	1.96	0.34	1KHz

- DC current at which the inductance drops 10% (typ) from its value without current.
- Operating temperature range -40°C to +125°C.
- Electrical specifications at 25°C.
- Packing : 13" reel, machine-ready ,embossed plastic tape (1,000 parts per full reel).